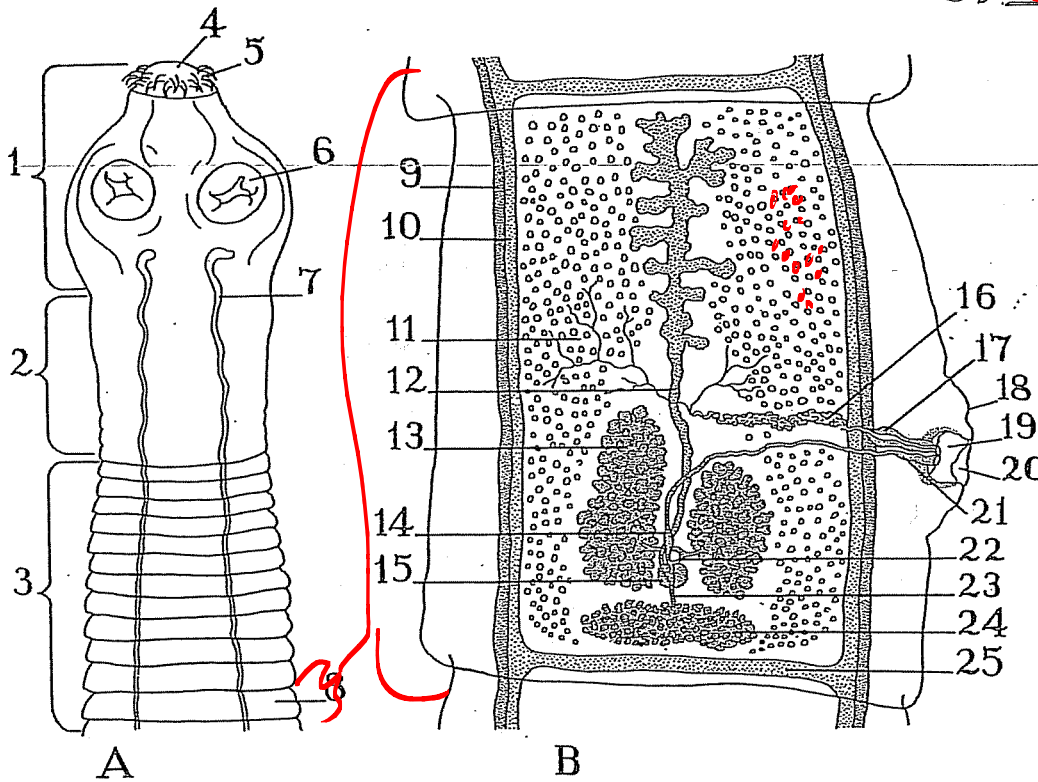


Phylum: Platyhelminthes

Tapeworm (*Taenia serrata*)

Class: Cestodea

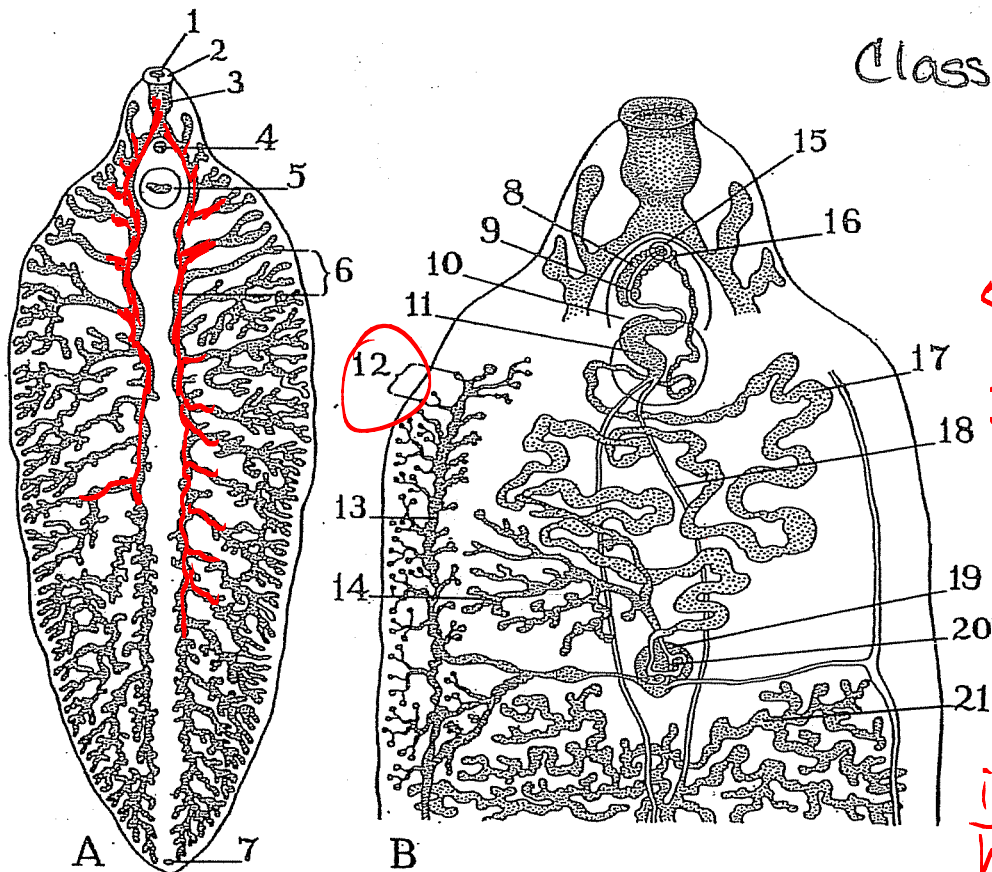
(cestoda)



- 1. scolex
- 5. hooks
- 6. suckers
- 8. Proglottids

Liver Fluke (*Fasciola*)

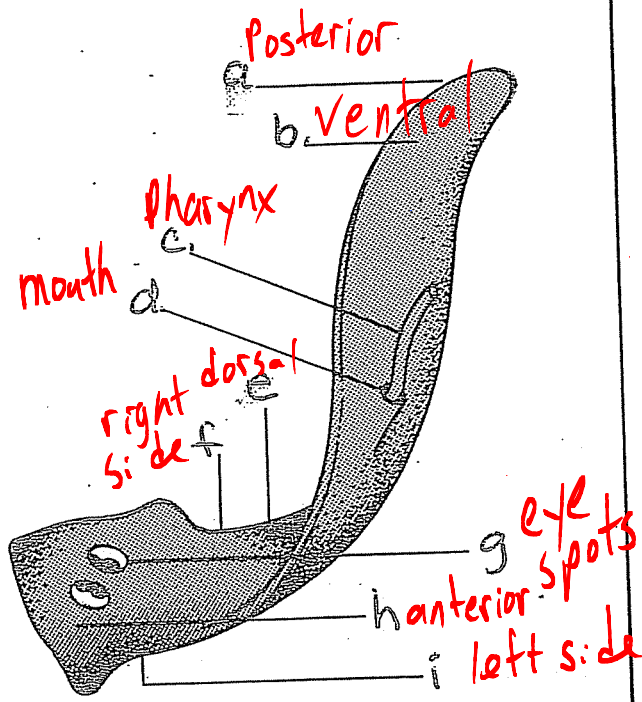
Class: Trematoda



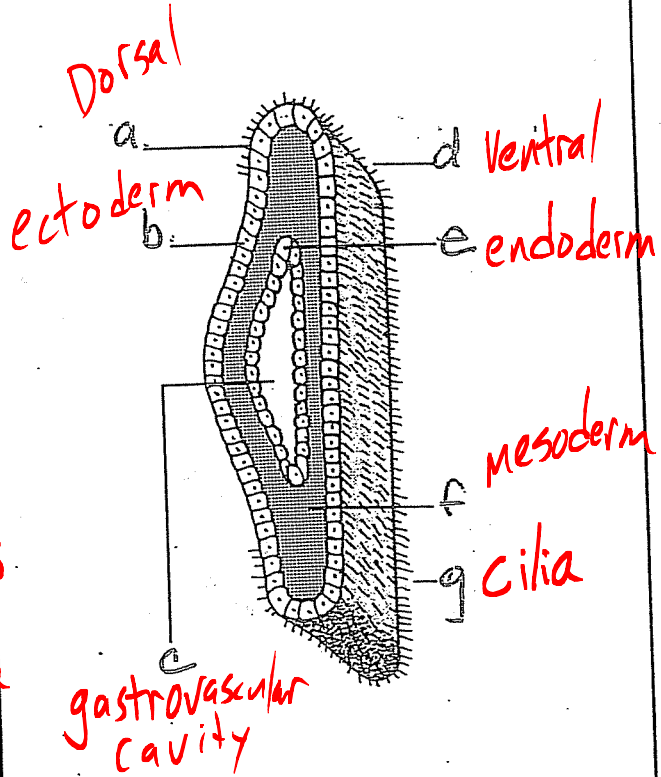
- 1. mouth
- 5. sucker
- 3. gastrovascular cavity

Life cycle contains an intermediate snail host & human host

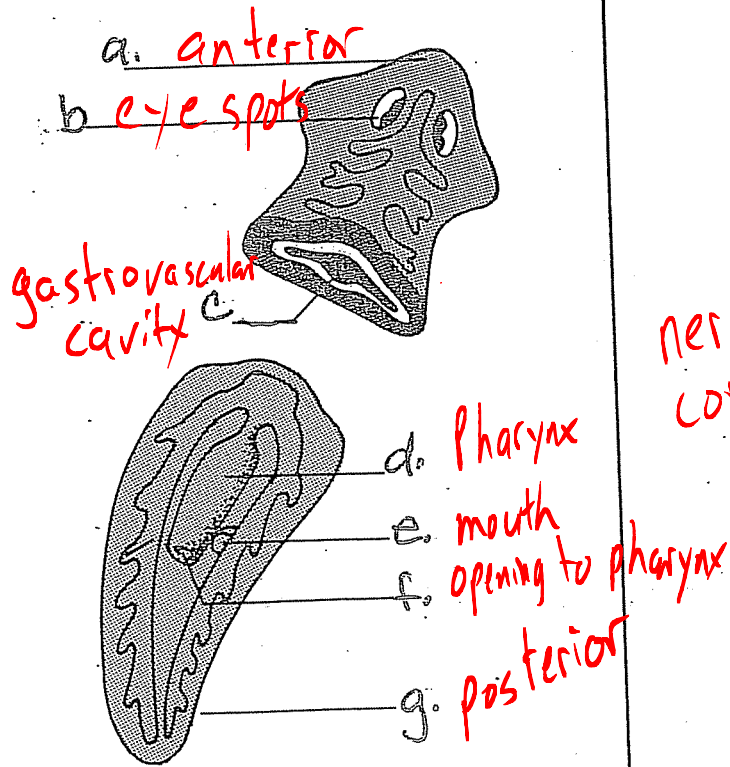
Phylum: Platyhelminthes - Flatworms  
 A PLANARIAN Class: Turbellaria



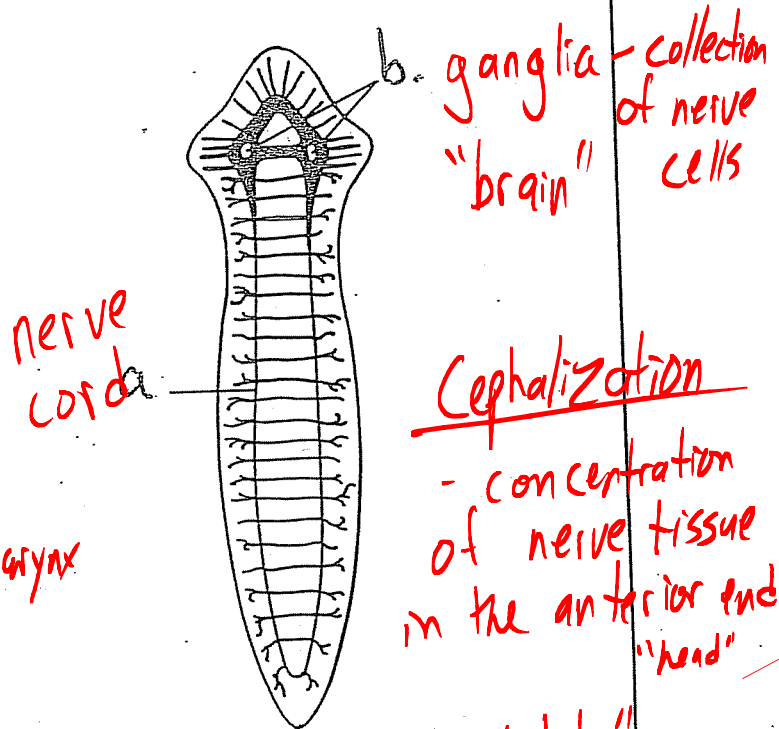
Body Plan



Cross Section



Digestive System



Nervous System

Cephalization  
 - concentration of nerve tissue in the anterior end. "head"