

Sponges - A Coloring Worksheet Answer Key

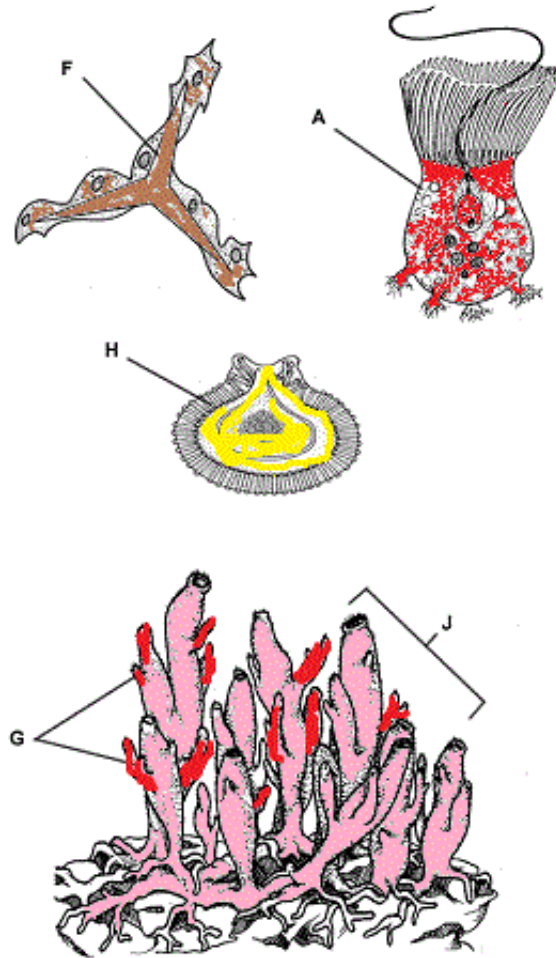
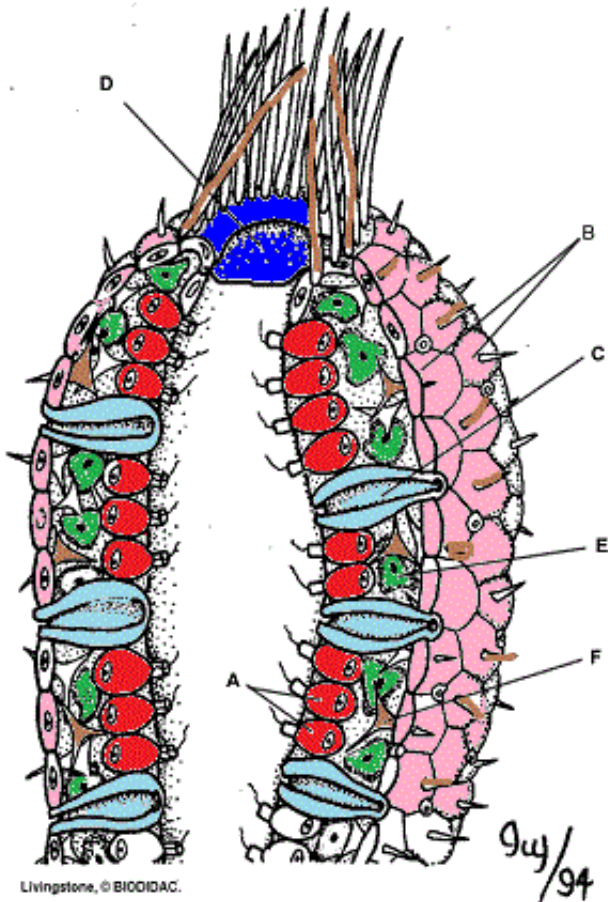
Original Document: [Sponges - A Coloring Worksheet](#)

Students read about sponges, how they are classified, how they eat and where they are found. The instructions included specific information about sponge anatomy to be colored on diagram.

Questions:

1. What did early biologists think sponges were? plants
2. Sponges belong to the Kingdom Animalia and the Phylum Porifera
3. Sponges are [unicellular or multicellular] and [prokaryotic or eukaryotic]
4. What type of symmetry do sponges have asymmetry
5. What does it mean to be sessile? cannot move, remains attached to surfaces
6. How do sponges get their food? filter feeding
7. Water enters the sponge through the incurrent pore and leaves through the osculum
8. What helps to circulate water through sponge? collar cells
9. What is the job of the amoebocyte? distribute food and oxygen
10. What two substances give the sponge support? spongin and spicules
11. Tiny sponges growing from the main body of the sponge are called buds
12. What is a gemmule? group of amoebocytes with a hard covering
13. What is a hermaphrodite? can produce both sperm and eggs

Sample Coloring



Livingstone, © BIOIDAC.

Recommended for you

A diagram of a biological structure, possibly a cross-section of a plant or animal tissue. It features a central canal and surrounding layers. The label 'es' is on the left. There are several empty boxes for identification.

Ch 30-1 Reading

www.biologycorner.com

A diagram of a semi-circle with a blue shaded area. It is part of a dichotomous key.

Dichotomous Key with Smilies

www.biologycorner.com

A diagram of a bone cross-section. It shows a central canal (g) surrounded by a layer (f) and an outer layer (h). Labels e, d, and b point to other parts of the bone structure.

Bone Coloring Answer Key and Coloring Sample

www.biologycorner.com