

Water Flow and Feeding in Phylum Porifera

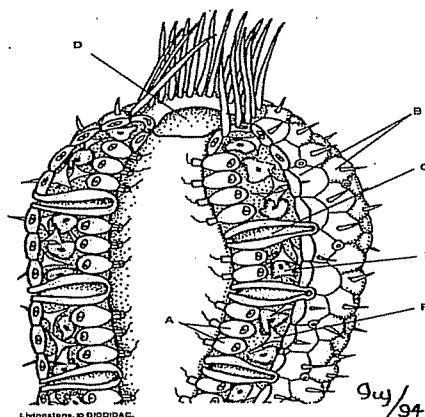
Please go to the following link :

<http://www.biology.ualberta.ca/courses.hp/zool250/animations/Porifera.swf>

1. On the right click "whole sponge & sponge cell types". Complete the following chart:

Type of Cell	Function in Sponge	Diagram
Choanocyte		
Porocyte		
Spongocoel		
Osculum		
Spicule		
Amoebocyte		

2. On the right side, click "water flow through an asconoid sponge". On the diagram below draw arrows to show how water moves through a sponge.



3. On the right side click "Water flow and feeding in a choanocyte". Answer the following questions.

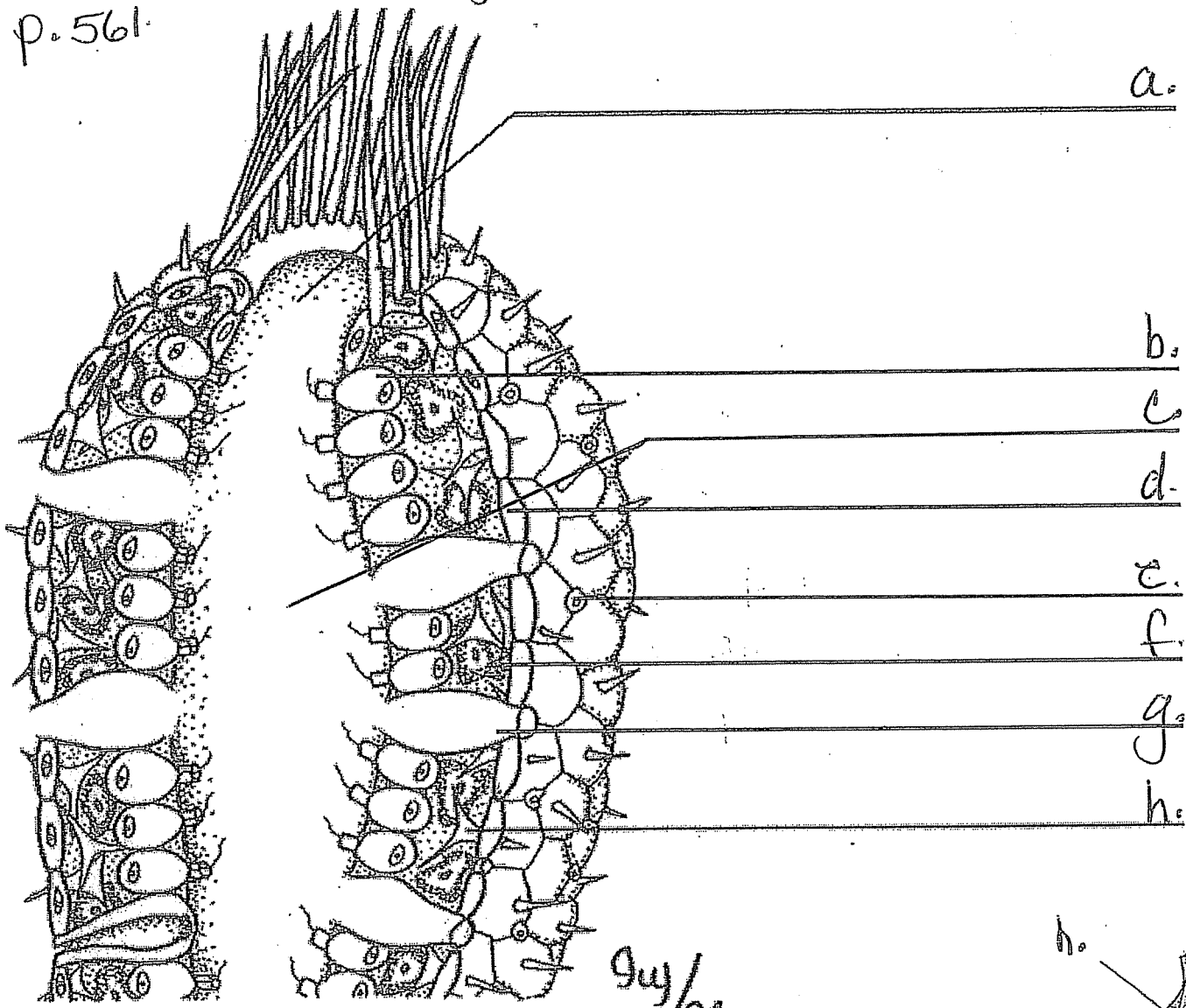
1. On the left side click "water flow". Describe and draw the water flow around the collar of the choanocyte.

2. On the left side click "particle capture". Describe and draw how a choanocyte captures particles.

3. On the left side click "Particle Distribution". Describe and draw particle distribution in a sponge.

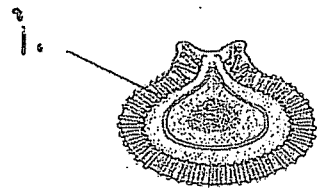
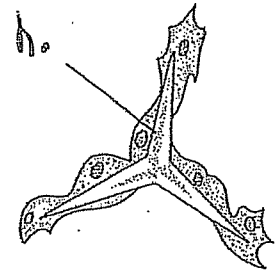
Sponge Anatomy Phylum _____

p. 561



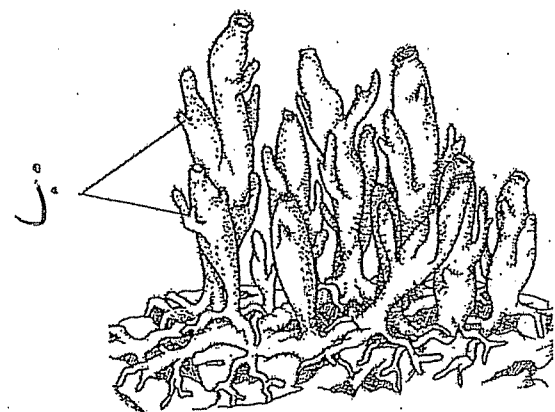
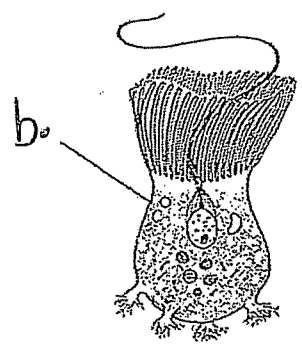
Livingstone, ©BIODIDAC.

9/4/94



Word Bank :

- Collar cell
- Osculum
- Pore
- Ectoderm/epidermis
- Amebocyte
- Spicule
- Central cavity
- pore cell
- buds
- gemmule



3

3

3